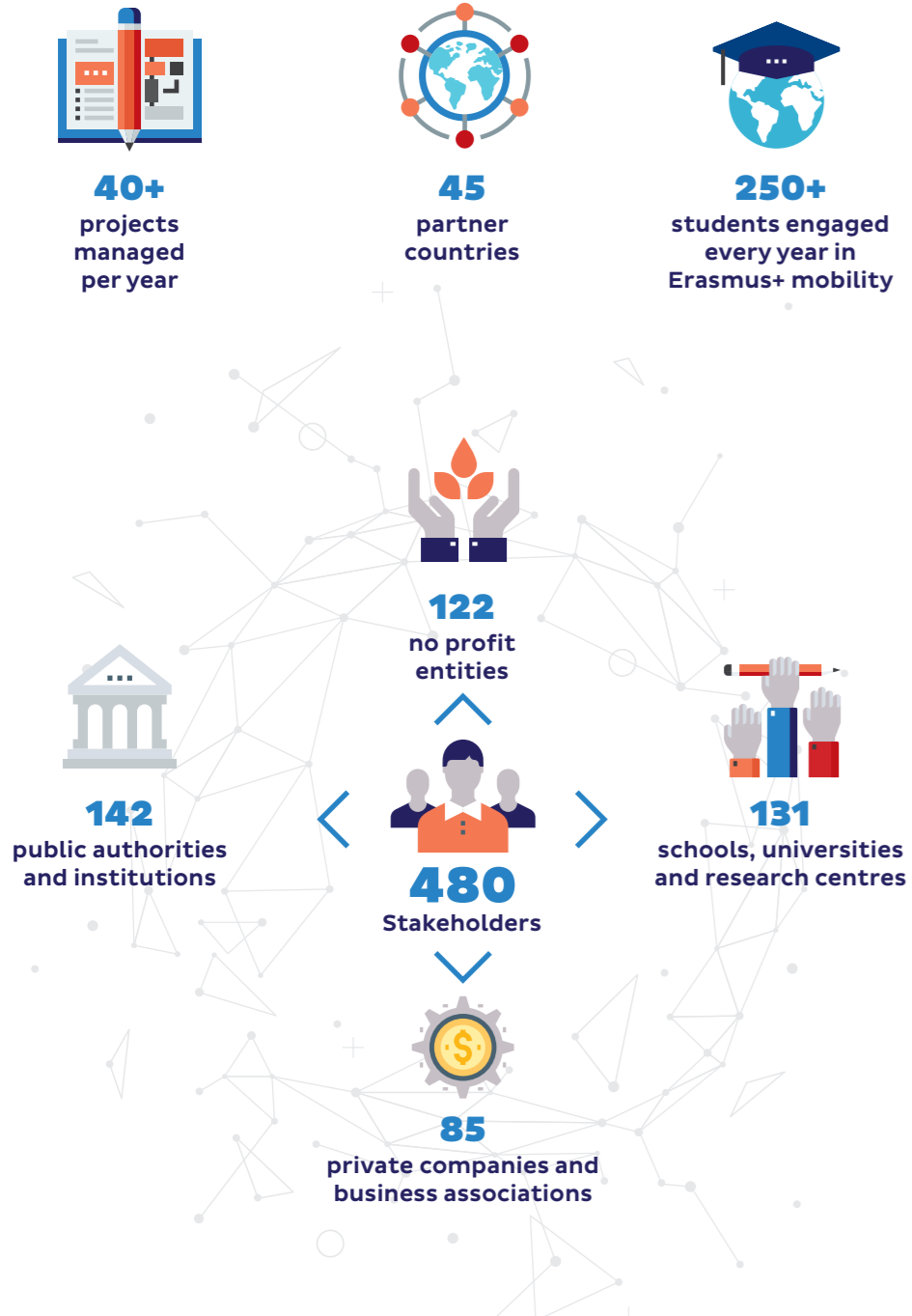


Key figures



FONDAZIONE

E*35

PER LA PROGETTAZIONE INTERNAZIONALE

Fondazione E35

Via Vicedomini 1, 42121 Reggio Emilia, Italy
+39 0522 444 421
info@e-35.it

Fundação E35 - Pemba

Avenida Marginal, Bairro Nanhimbe,
Cidade de Pemba, Mozambique

Visit us at:

www.e-35.it

[f /fondazioneE35](https://www.facebook.com/fondazioneE35)

[@ /fondazione_e35](https://www.instagram.com/fondazione_e35)

[@ /fundacao_e35pemba](https://www.instagram.com/fundacao_e35pemba)

[in /Fondazione E35](https://www.linkedin.com/company/fondazioneE35)



E*35
PROGETTARE FUTURO

FOUNDATION FOR INTERNATIONAL PROJECTS
REGGIO EMILIA

E35 – Foundation for International Projects of Reggio Emilia

The **E35 Foundation** is a non-profit, participatory organization dedicated to promoting **Reggio Emilia** territory on the European and international stage. Its mission is to attract innovative partnerships, projects, expertise and resources to support local development and public policy.

Named after the European route E35 – which links Rome to Amsterdam and passes through Reggio Emilia – **the Foundation acts as a bridge**, strengthening connections and networks between Emilia, Europe and the world. Born in 2015, the Foundation was founded by the Municipality of Reggio Emilia, the Province of Reggio Emilia, the Chamber of Commerce, Manodori Foundation and the Research Center on Animal Production (CPRA).

At E35 Foundation we aim to:

- Promote best practices and innovative experiences of Reggio Emilia territory at international level
- Support the local institutions and stakeholders in building and sustaining strategic partnerships and networks at European and international level
- Support local actors in defining innovative policies and actions, leveraging on international funding opportunities
- Activate the local community around European values and opportunities

E35 Foundation is based in Reggio Emilia, Italy. It also has a dedicated **branch office in Pemba**, Mozambique, which plays a key role in promoting decentralized cooperation between Reggio Emilia, the city of Pemba and other Municipalities in Mozambique through co-development of local policies and initiatives, fostering long-term connections among communities.





Enhancing international relations and exchanges

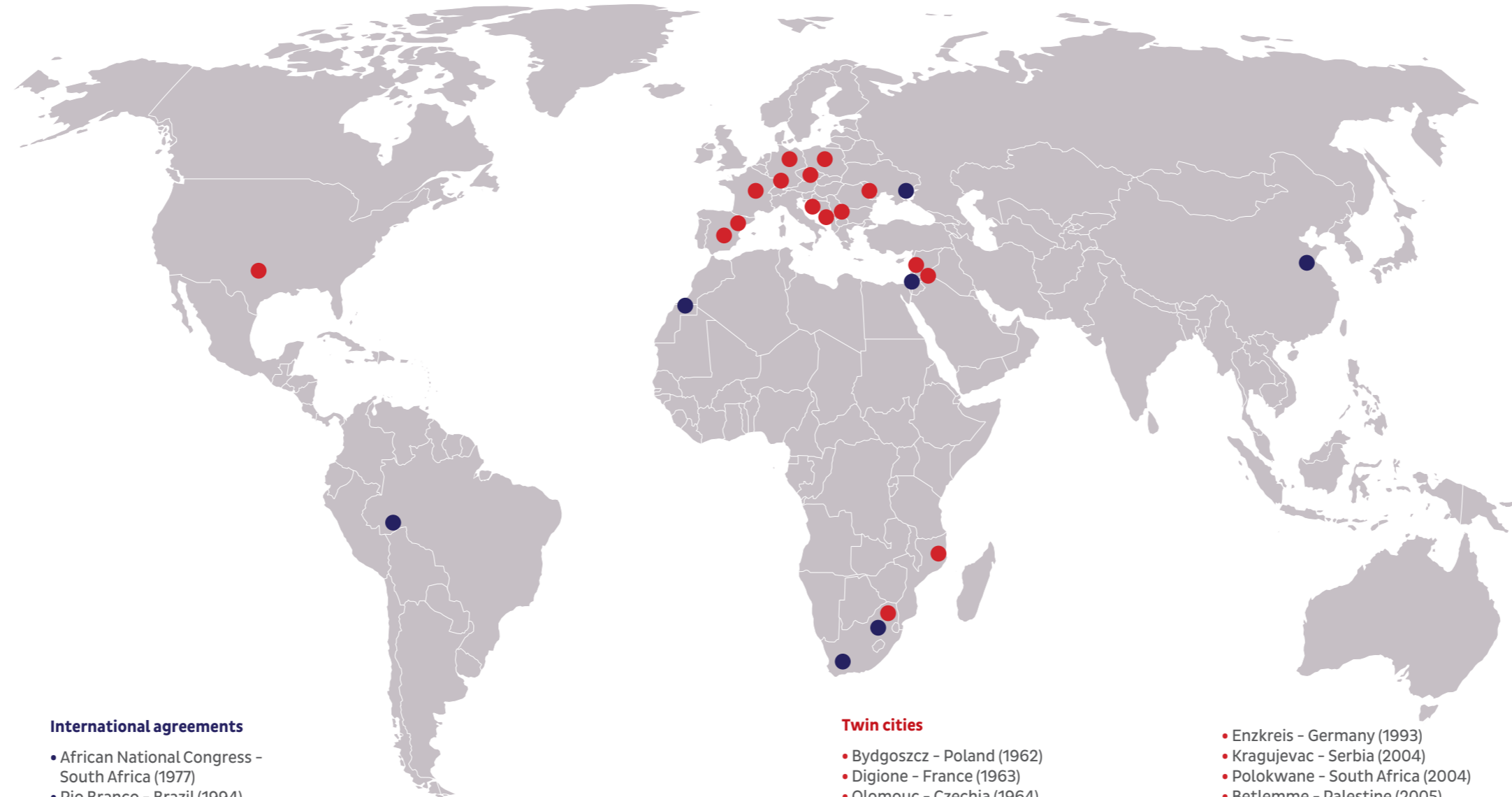
E35 works to strengthen the **international dimension of Reggio Emilia** territory, managing a broad network of twinning relations, international agreements and networks of towns. E35 enhances a culture of internationalization among local institutions and communities, guided by the belief that global relationships are essential to foster local policies and development, innovate services, generate opportunities for knowledge exchange, investment and collaboration, and support a peaceful global framework.



Building innovation through European projects

European projects are a key instrument to innovate policymaking and local development strategies, advancing the priorities set out in the **Sustainable Development Goals**. Through the design and implementation of projects funded by major EU programmes, E35 supports local institutions in driving innovation to address emerging challenges across a wide range of policy areas, from social innovation and environmental sustainability to green transition, culture and local sustainable economy.

Reggio Emilia institutional network



International agreements

- African National Congress - South Africa (1977)
- Rio Branco - Brazil (1994)
- Rizhao - China (1998)
- Smara - Sahrawi Republic (2000)
- Nablus - Palestine (2007)
- Ekurhuleni - South Africa (2016)
- Melitopol - Ukraine (2023)

Twin cities

- Bydgoszcz - Poland (1962)
- Digione - France (1963)
- Olomouc - Czechia (1964)
- Schwerin - Germany (1966)
- Zadar - Croatia (1972)
- Girona - Spain (1982)
- Fort Worth - United States (1985)
- Chisinau - Moldova (1989)

- Enzkreis - Germany (1993)
- Kragujevac - Serbia (2004)
- Polokwane - South Africa (2004)
- Betlemme - Palestine (2005)
- Albacete - Spain (2009)
- Pemba - Mozambique (2012)
- Beit Jala - Palestine (2019)
- Sarajevo Centar - Bosnia and Herzegovina (2022)



Building partnerships for sustainable development

E35 is actively engaged in **international cooperation projects** with countries outside the EU—particularly Mozambique, South Africa, Palestine, Senegal, Ghana, Ukraine and the Balkans. Building on the long-standing relations fostered by the Reggio Emilia community since the 1970s, E35 promotes territorial partnerships for sustainable development, solidarity-based actions and long-term cooperation between local communities, working in close collaboration with local institutions in partner countries.



Creating a new generation of European citizens

Fostering a **European and international outlook among younger generations** is one of E35 Foundation's core priorities. To this end, the Foundation promotes a wide range of initiatives—both local and international—developed with and for young people, making them active protagonists of their own future. These include Erasmus+ mobility programmes for around 250 students per year, youth exchanges with twin cities, and awareness activities on European topics, all aimed at deepening intercultural understanding and cultivating a sense of active, informed European citizenship.